



COMUNE DI SUBBIANO

(Provincia di Arezzo)

REGOLAMENTO URBANISTICO

(L.R. 1/2005 ART.55)

VARIANTE N.8



STUDIO IDRAULICO
CARTE DELLE AREE ALLAGATE



TAV.
AA

ADOZIONE
del. C.C. n.47
del 5/12/2013

DATA DI REVISIONE


DATA DI APPROVAZIONE
del. C.C. n.17
del 09/04/2014

SCALA:
1:2.000



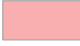
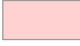



SINDACO Ilario Maggini
RESPONSABILE DEL PROCEDIMENTO Ing. Laura Paolucci
GARANTE DELLA COMUNICAZIONE Dott.ssa Rossella Bargellini

REDAZIONE Arch. Mauro Baldo
COLLABORAZIONE Arch. Monica Gnaldi Coleschi

INDAGINI GEOLOGICHE Geol. Franco Bulgarelli
COLLABORAZIONE Geol. Riccardo Ancillotti

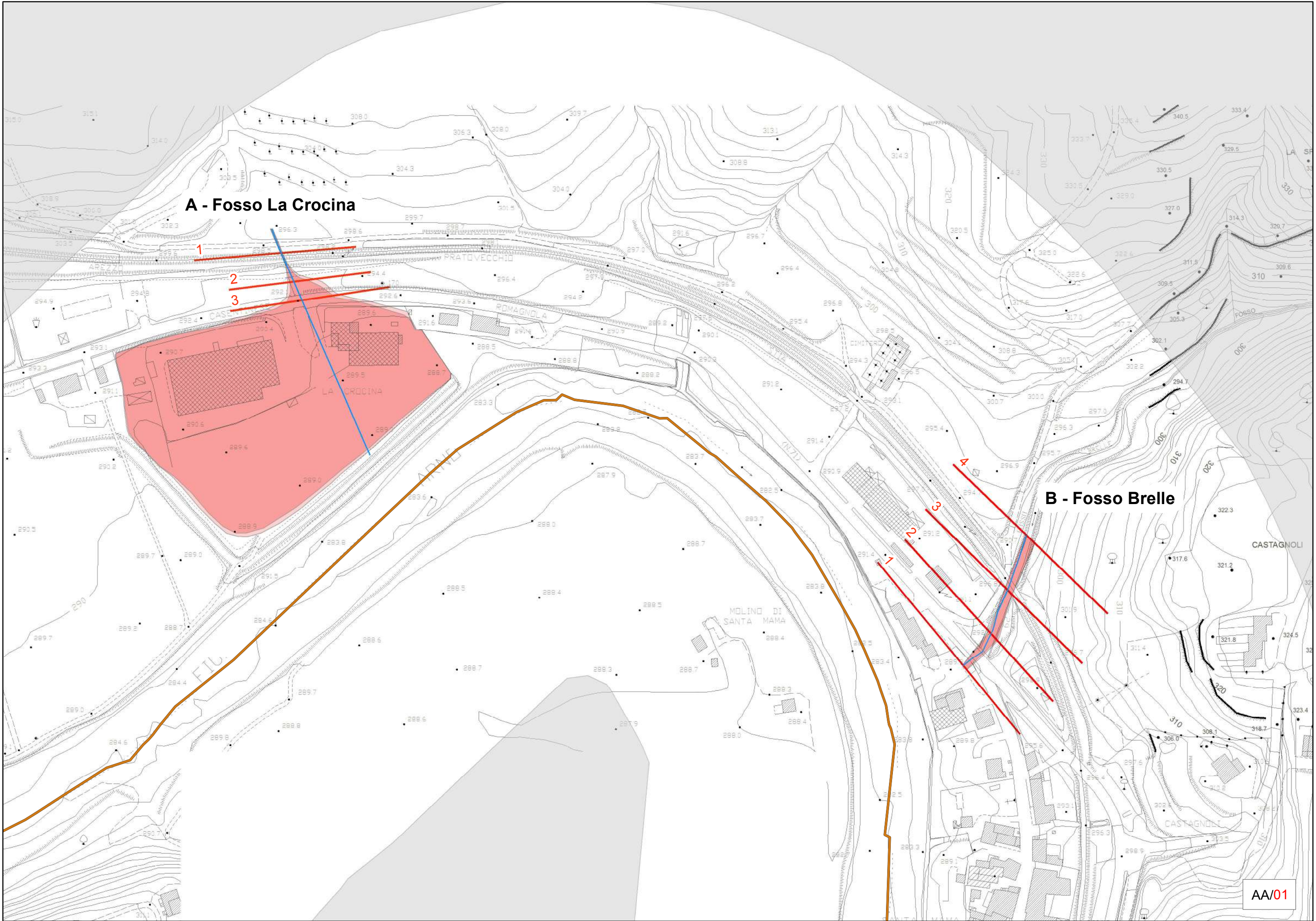
STUDIO IDRAULICO Ing. Giuseppe Donatelli
Ing. Lorenzo Corri  ProGeo engineering
Geol. Massimiliano Rossi
Ing. Ilaria Sproviero

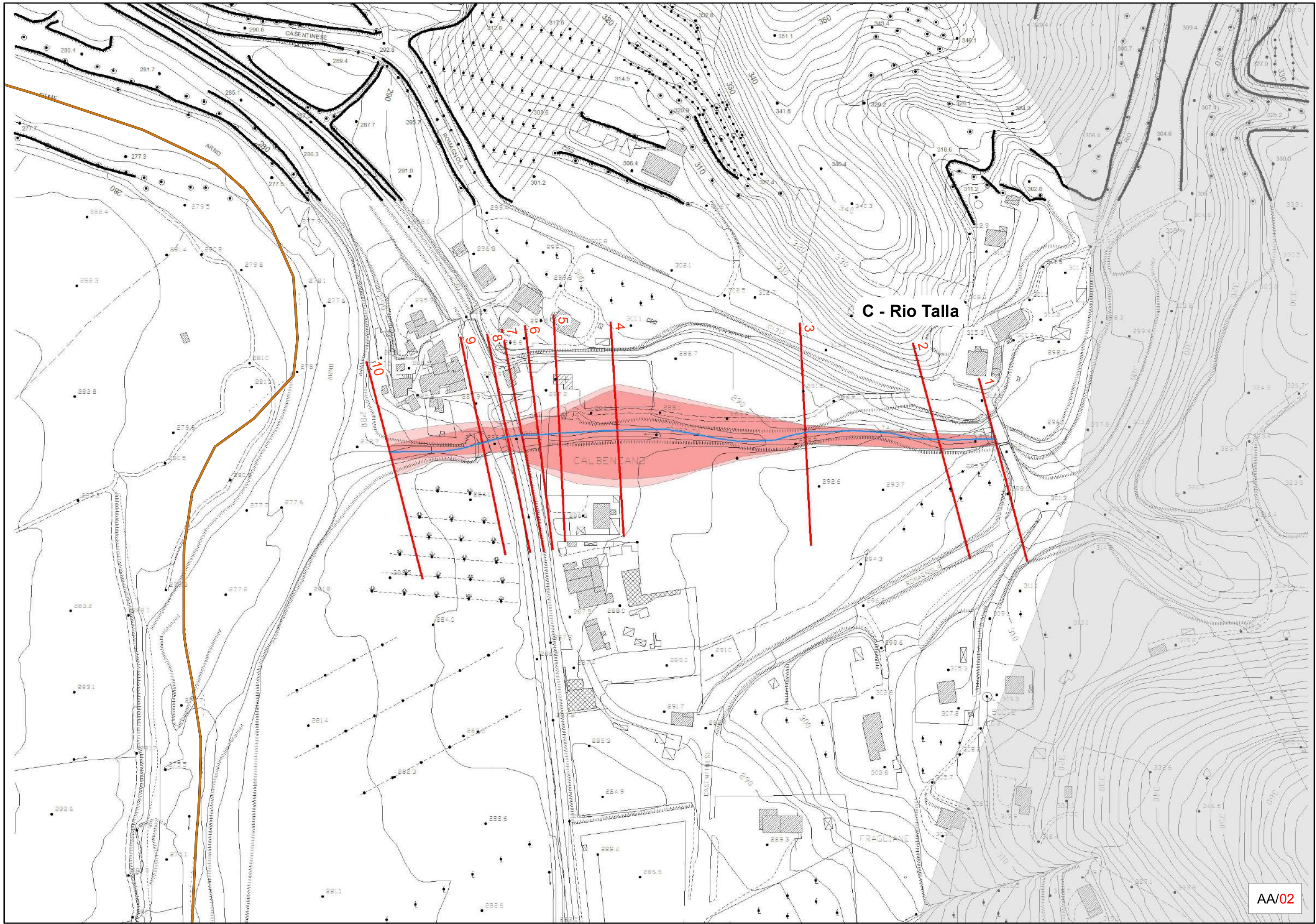
Legenda simboli

	Limite confine comunale
	Reticolo idrografico
	Aree Allagate TR=30 anni
	Aree Allagate TR=200 anni
	Sezioni Ing. Donatelli
	Sezioni Ing. Giabbanelli
	Sezioni ProGeo Associati
1	Numero sezione
A - S	Codice corso d'acqua
La Crocina	Nome corso d'acqua

A - Fosso La Crocina

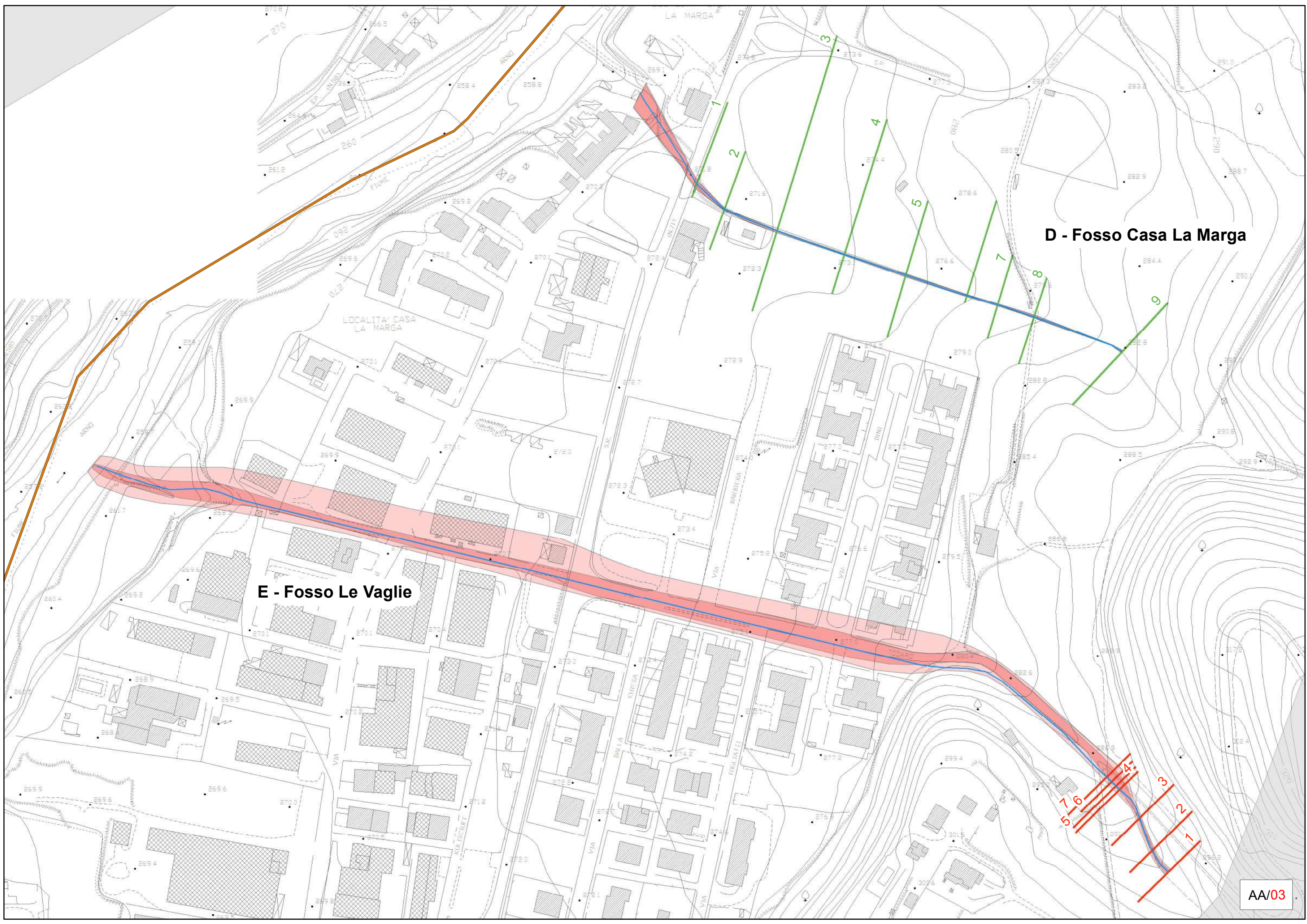
B - Fosso Brelle





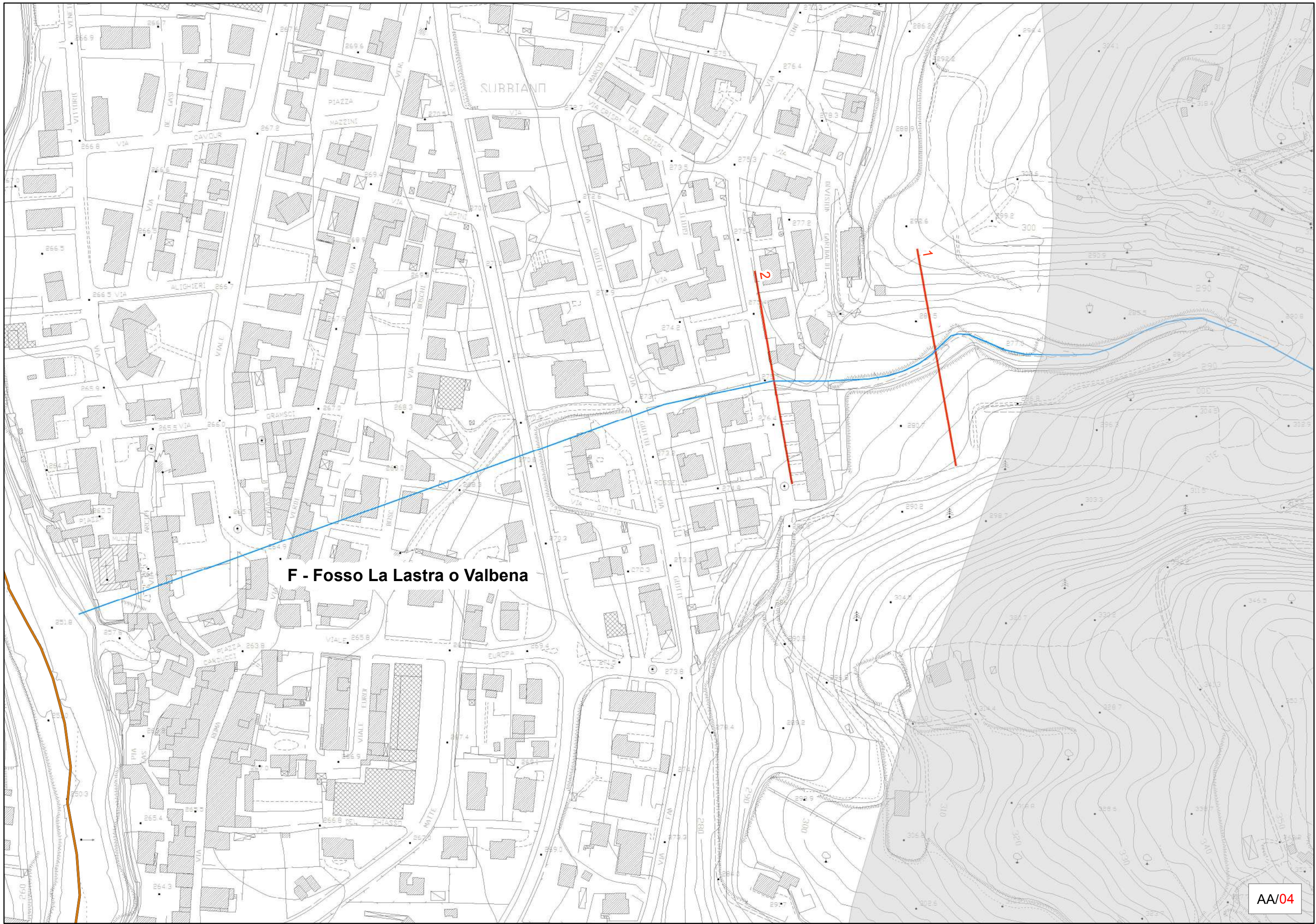
C - Rio Talla

CALBENZANZ

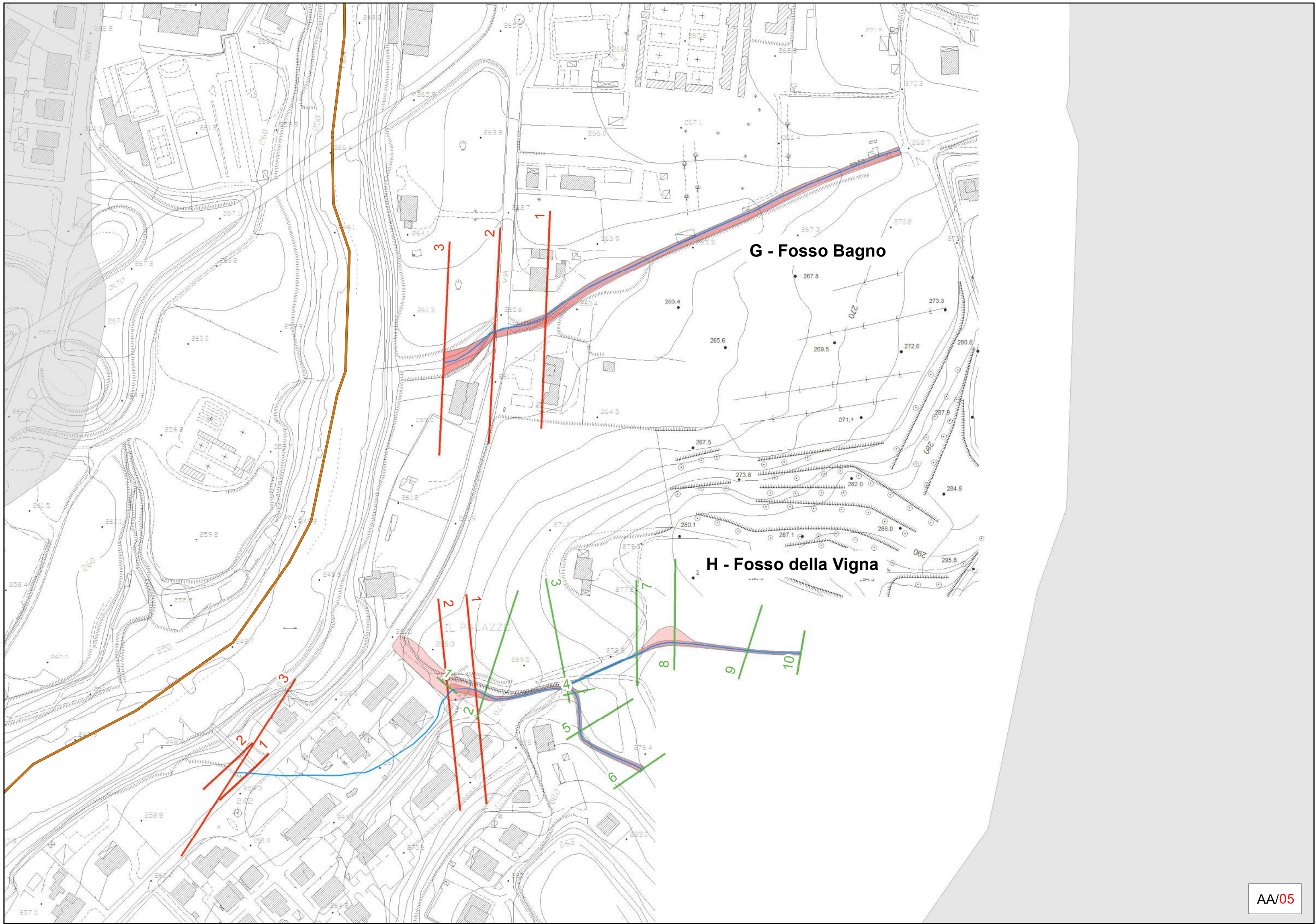


D - Fosso Casa La Marga

E - Fosso Le Vaglie



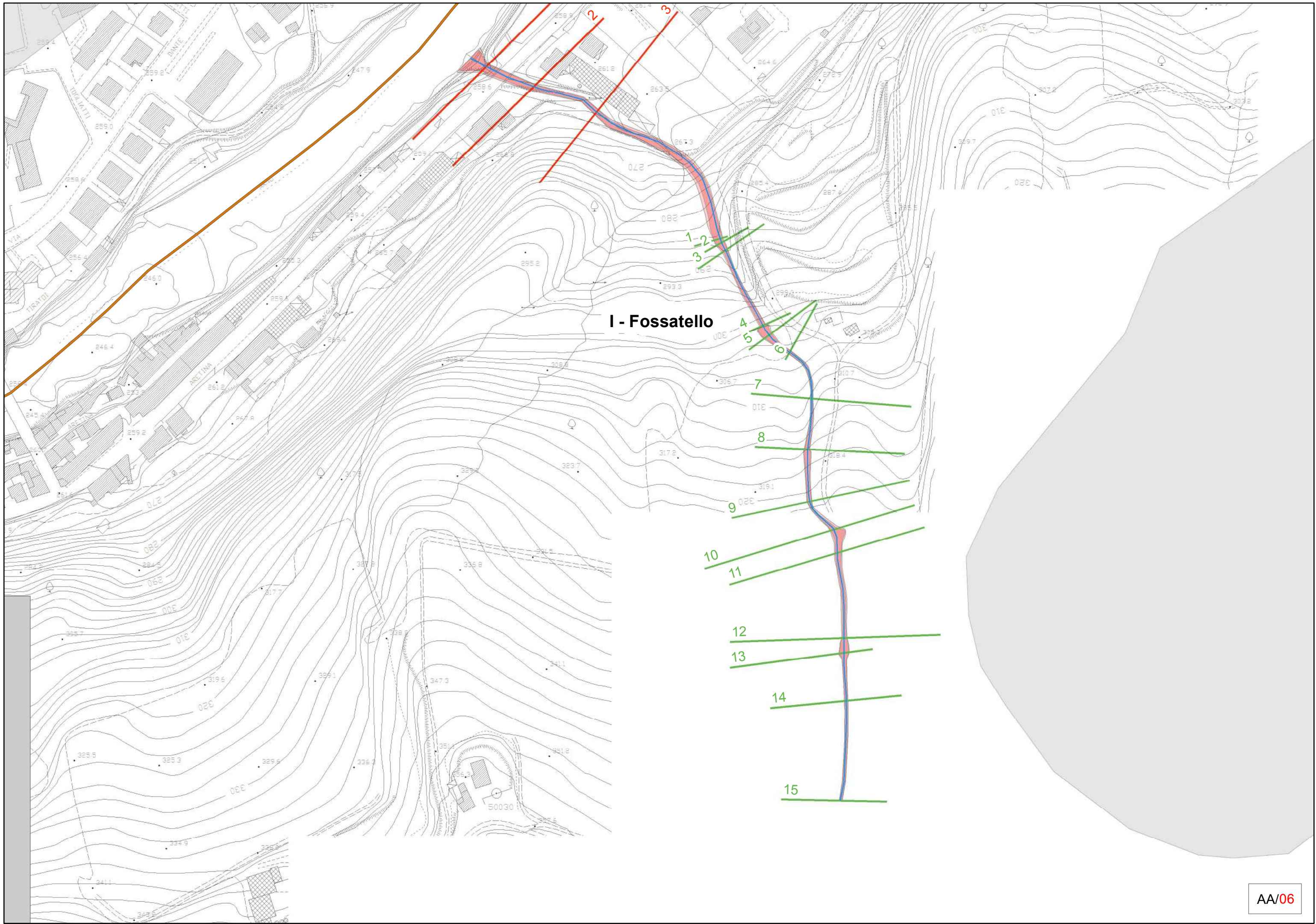
F - Fosso La Lastra o Valbena



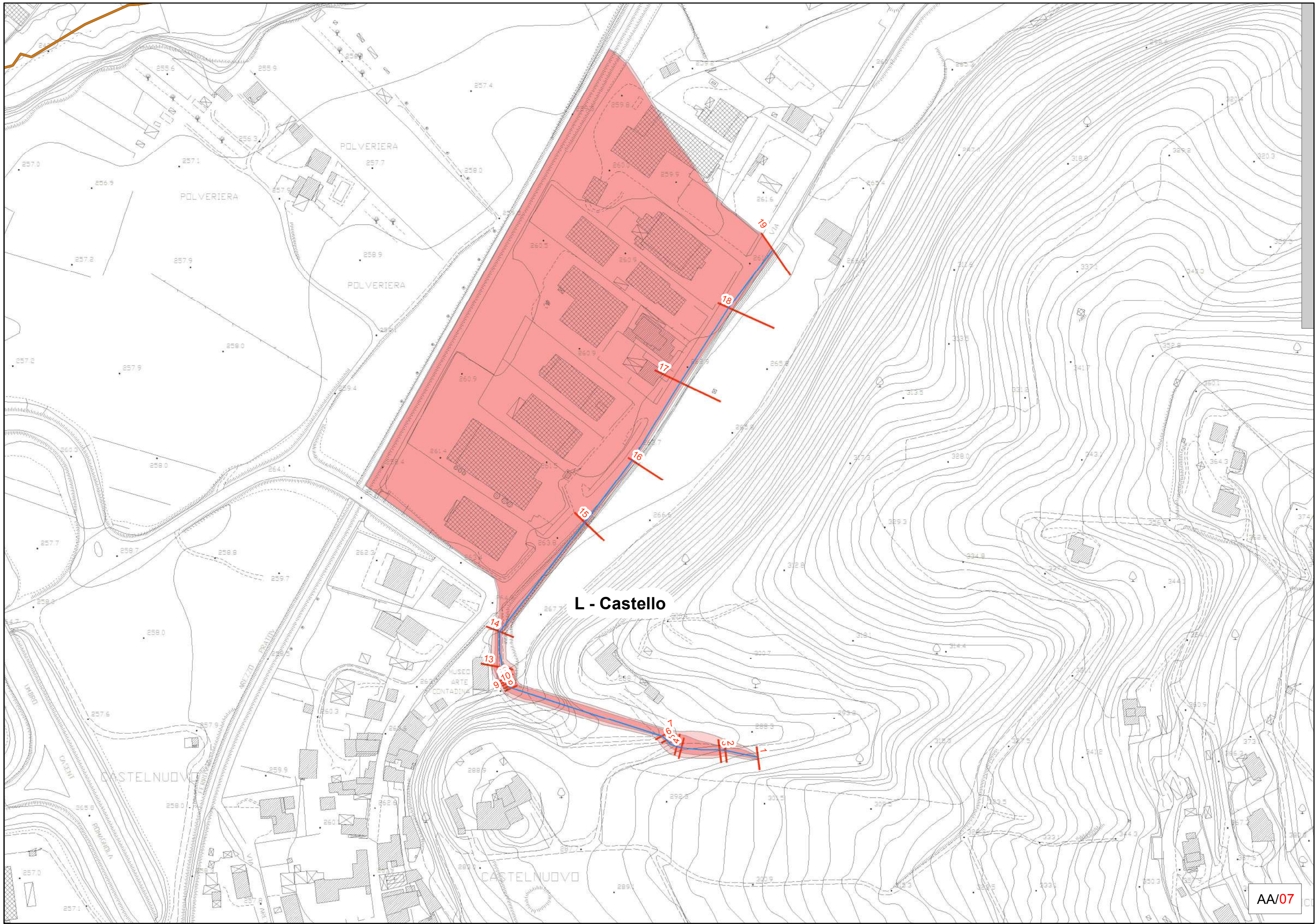
G - Fosso Bagno

H - Fosso della Vigna

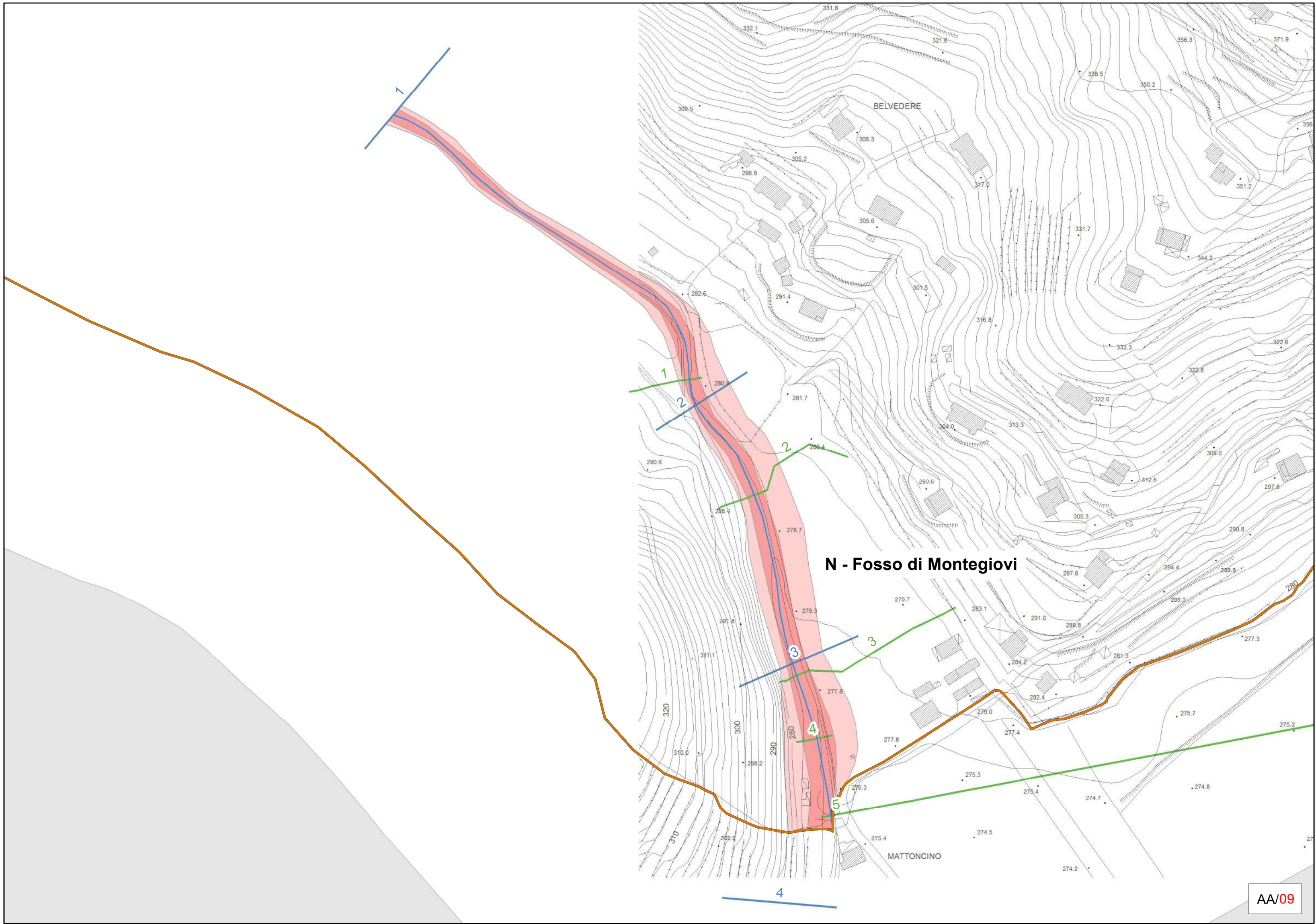
IL PALAZZO



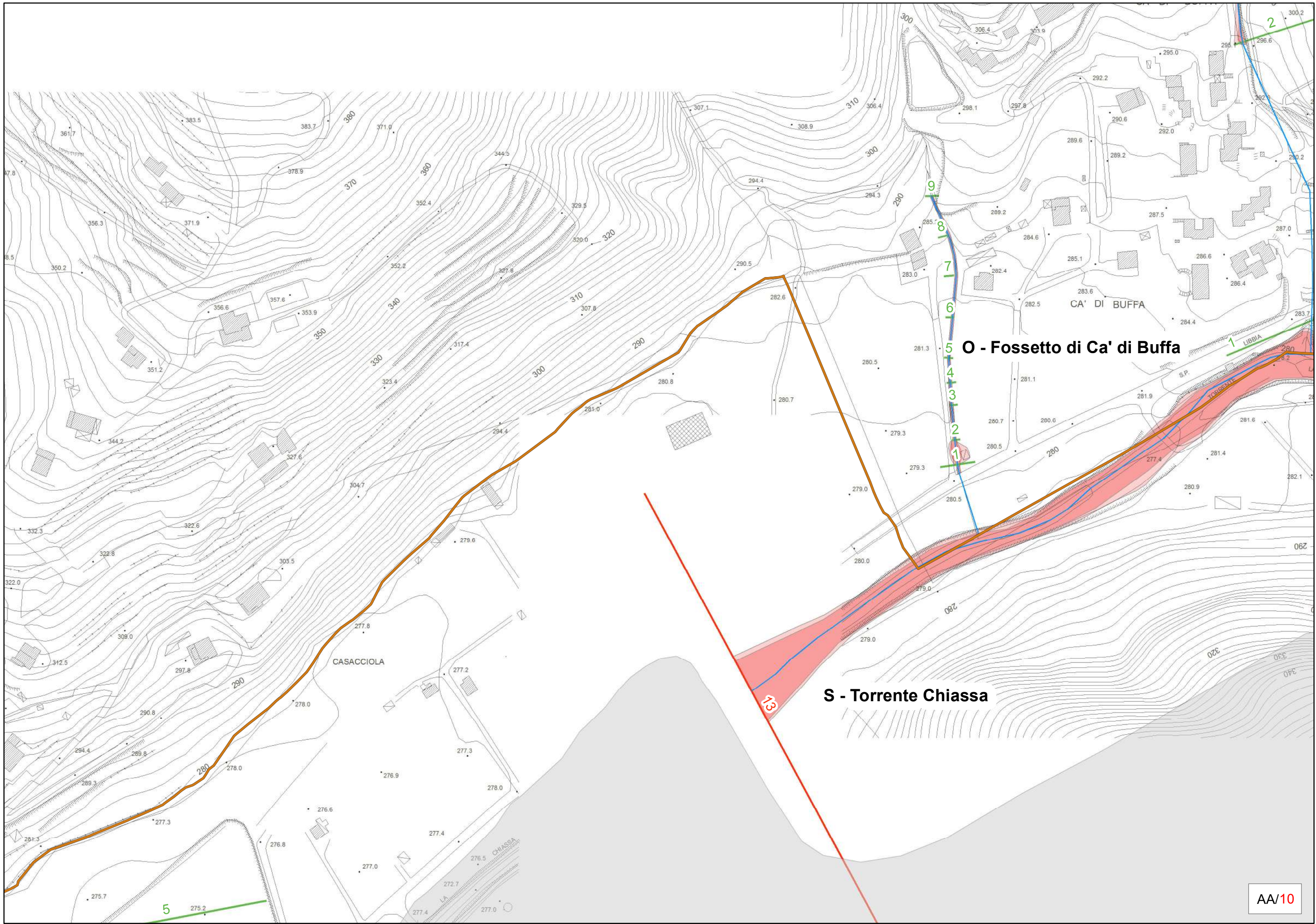
I - Fossatello







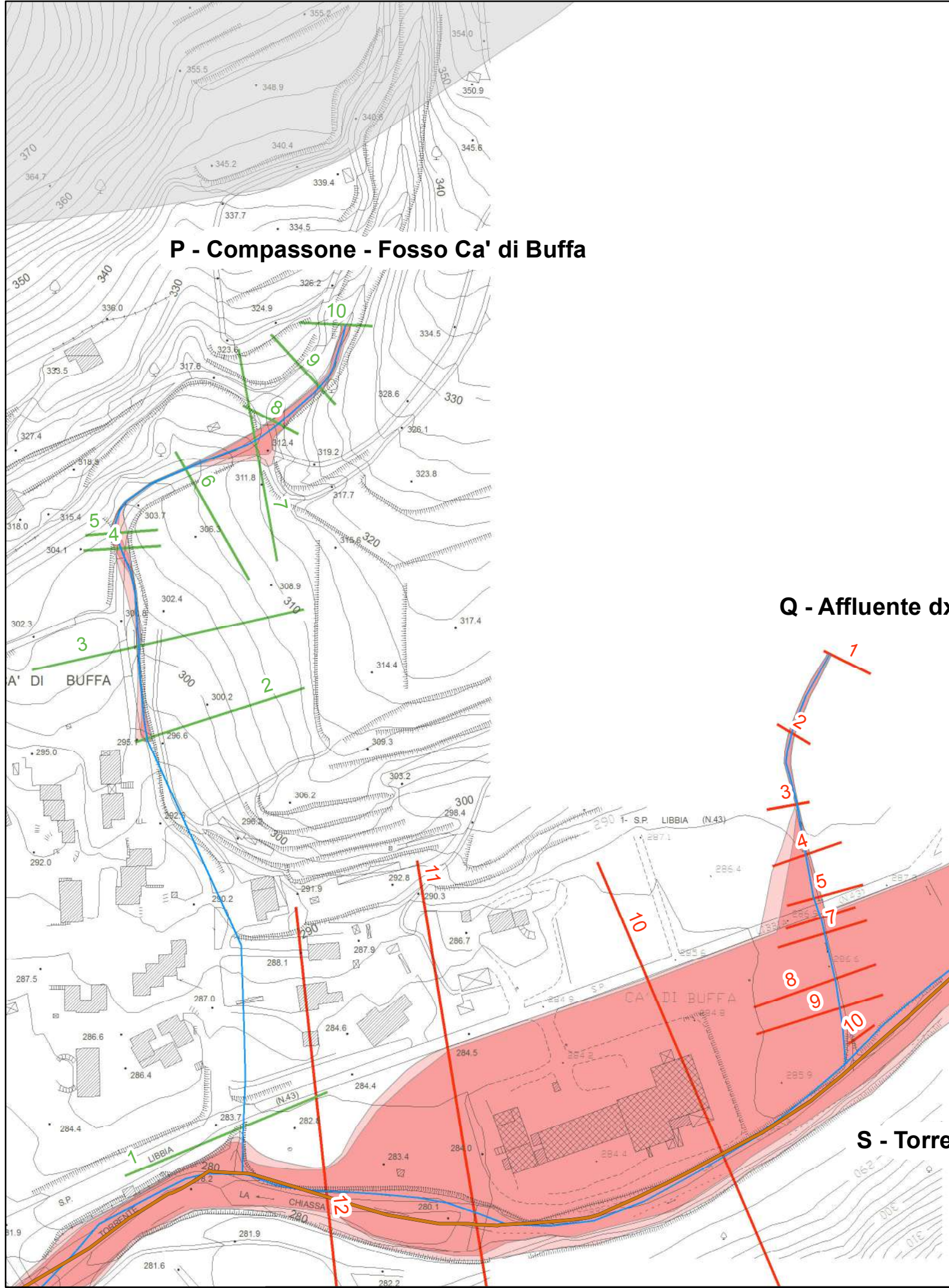
N - Fosso di Montegiovi



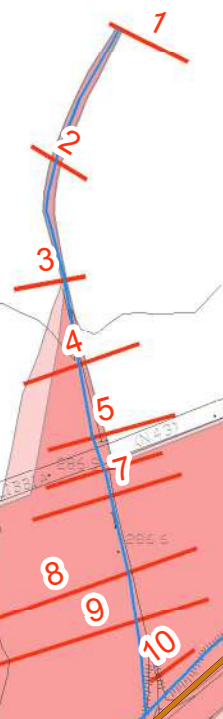
O - Fossetto di Ca' di Buffa

S - Torrente Chiassa

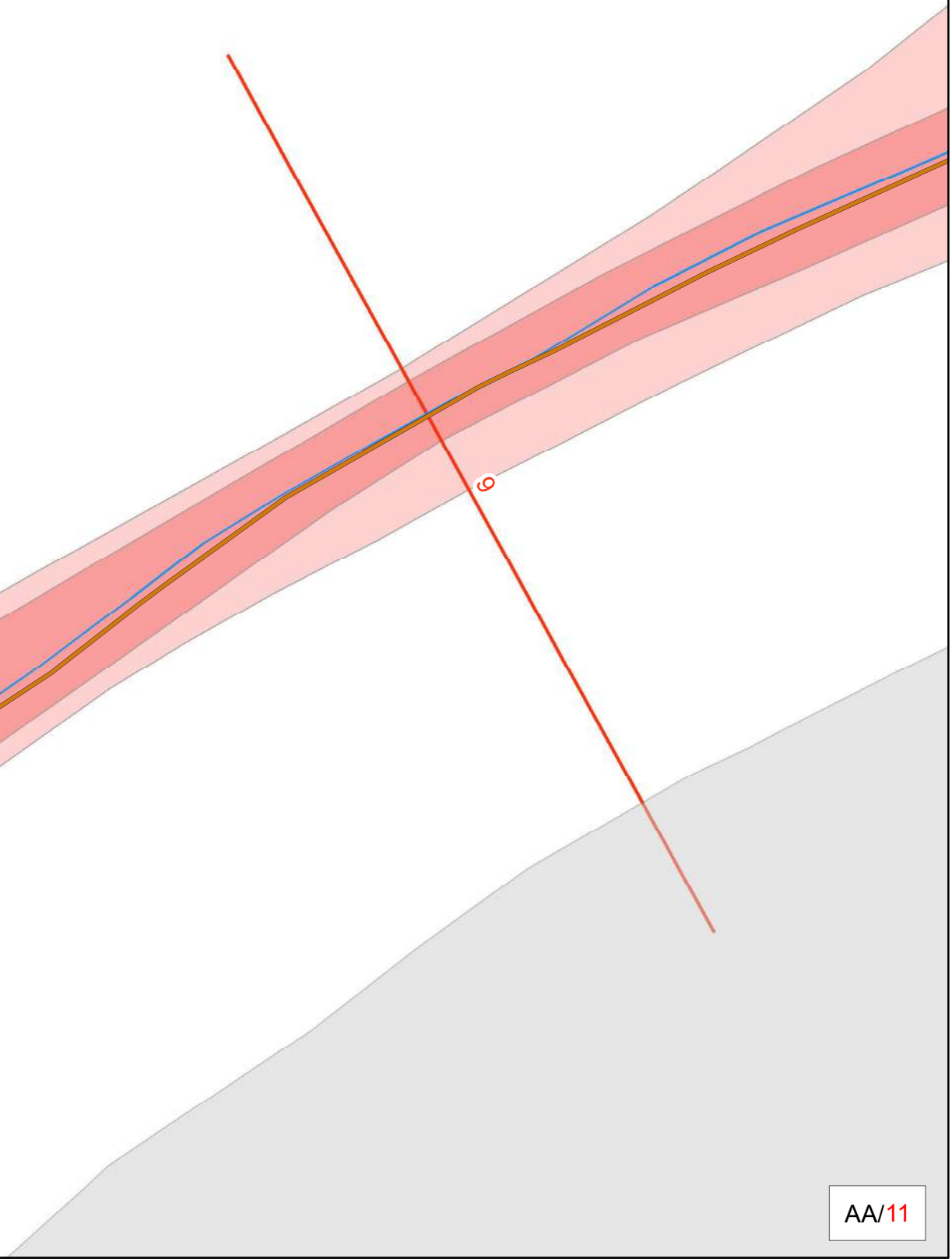
P - Compassone - Fosso Ca' di Buffa



Q - Affluente dx Chiassa



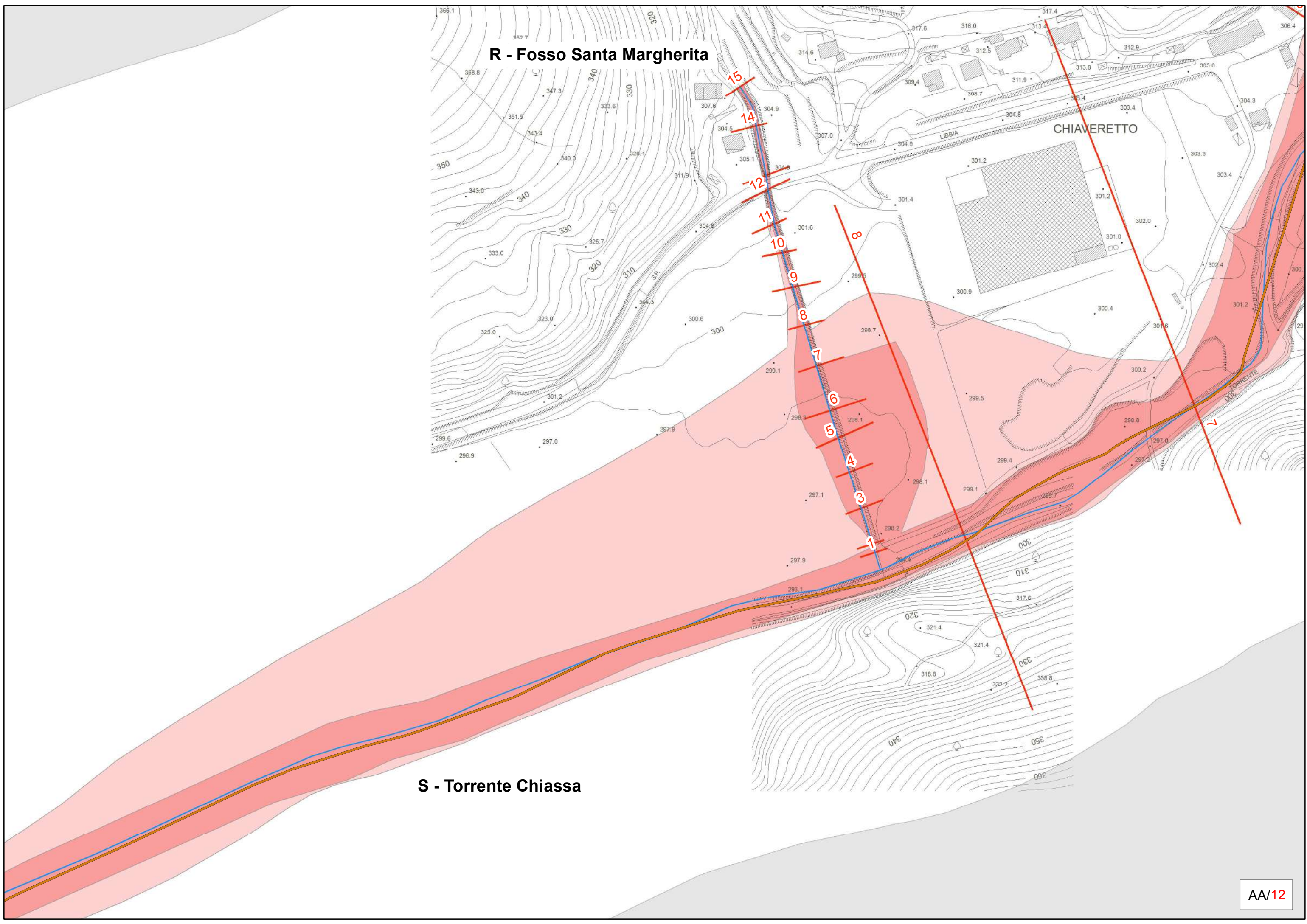
S - Torrente Chiassa



R - Fosso Santa Margherita

CHIAVERETTO

S - Torrente Chiassa



S - Torrente Chiassa

